

# Working In the Coal Mine

Sousaphone

Allen Toussaint

$\text{♩} = 140$  Drums set 1966 NOLA Lee Dorsey Groove  
Add Bass

**A** 4 8 **B** 8

25 **C** 7 **D**

35

39

41 **E** Spoken: (Rhythms are approximate-follow Adonis)

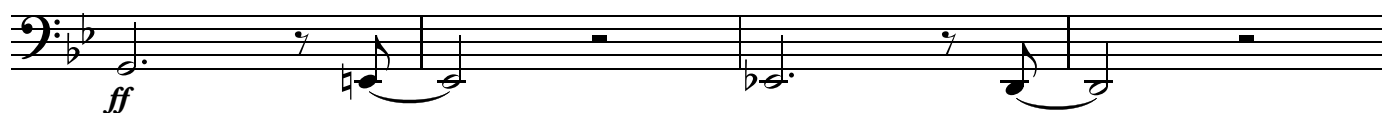
49 **F** Lord! I'm so ti-red How long can this go on?

53

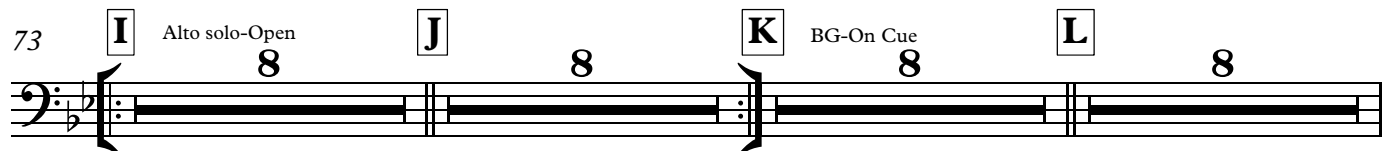
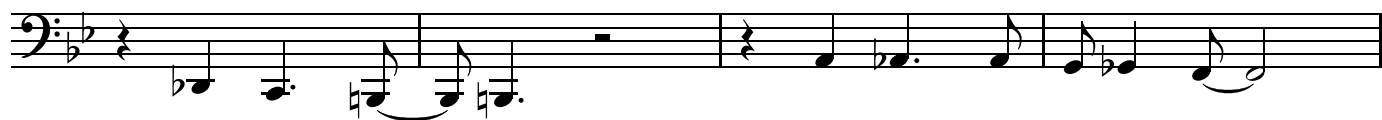
57 **G**

61

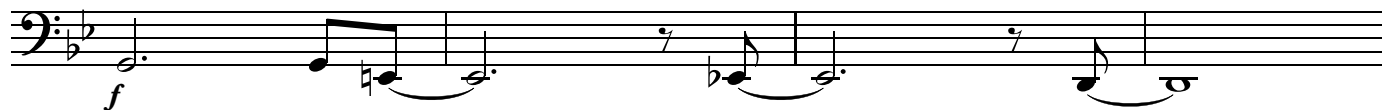
## Working In the Coal Mine...Sousaphone

65 **H**

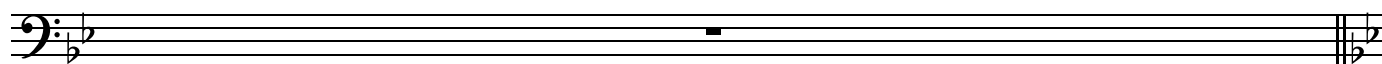
69

105 **M**

109

113 **N**

117

121 **O** Time stops...Jeronne says: "I'm so tired...How long can this go on?"122 **P** A tempo Gradual crescendo to U, then gradual fade to nothing

## Working In the Coal Mine...Sousaphone

3

126



130 **Q**



134

138 **R**

142

146 **S**

150

154 **T**

158



V.S.

## Working In the Coal Mine...Sousaphone

162 **U** Start long fade to end

166

170 **V**

174

178 **W**

182

Jeronne continues unaccompanied for a while...

