

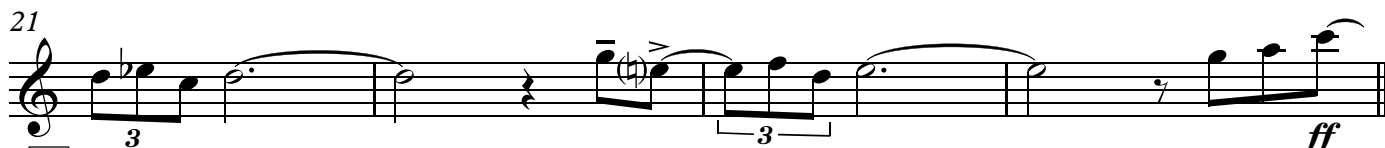
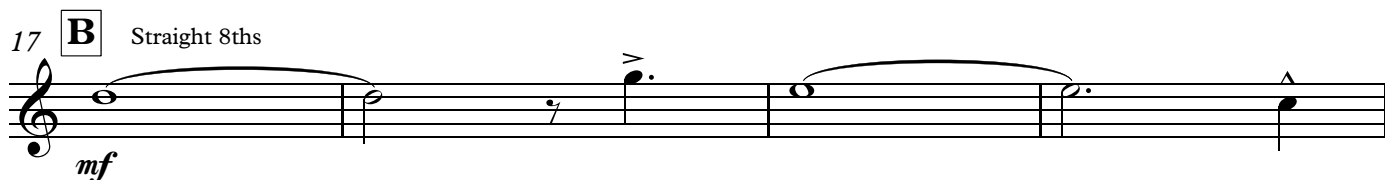
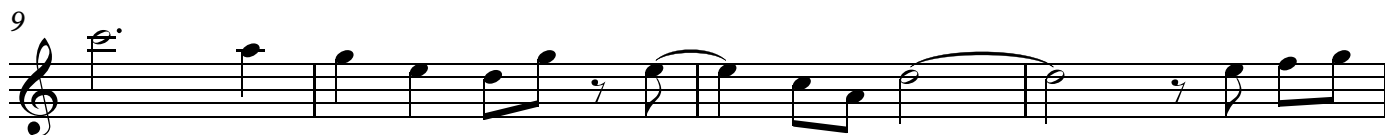
Bari

Probably

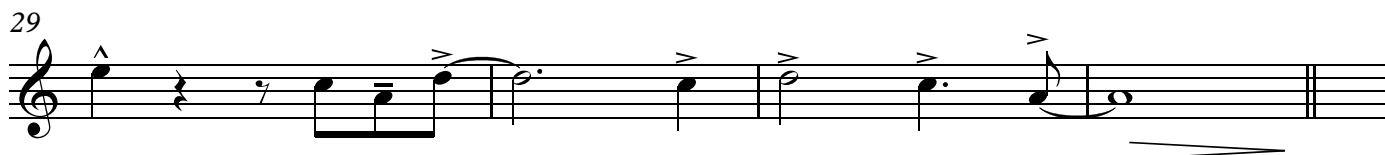
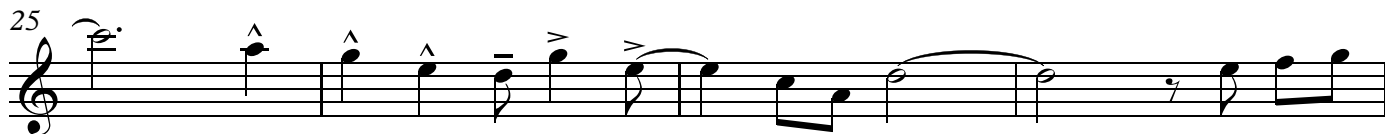
Jason Marshall Baritone Saxophone Feature

Composed/Arranged by Edward Petersen

A ♩=144 Swing
SOLO!



C Swing



D Quiet Soli-Flute Lead



Probably...Bari

37

41

45

E *ff*

49 F¹³ Straight 8ths Am⁶

53 F¹³ G¹³

F Swing

57 A⁻⁷ G⁻⁷ C^{7(b9)} F^{Δ7} E⁺⁷⁽⁺⁹⁾

61 B^{bΔ7} E^{bΔ7} B⁺⁷⁽⁺⁹⁾ E⁺⁷⁽⁺⁹⁾ Am⁶

G OPEN-BG Last X

65 G¹³ F^{#∅7} B^{b13(#11)} A⁻⁷


69 G⁻⁷ C⁷ F^{Δ7} B⁺⁷⁽⁺⁹⁾ E⁺⁷⁽⁺⁹⁾

73 A⁻⁷ G⁻⁷ C⁷ F^{Δ7} E⁺⁷⁽⁺⁹⁾


Probably...Bari

3

77 $B\flat\Delta^7$ $E\flat\Delta^7$ $B^+7(+9)$ $E^+7(+9)$ A^{-7}



H 81 F^{13} $A\text{m}^6$



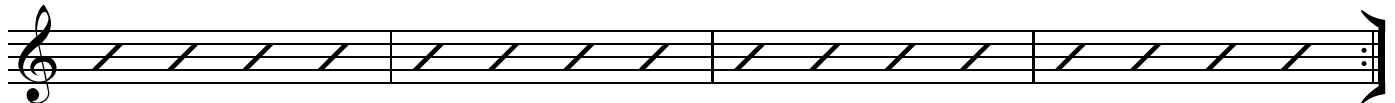
85 F^{13} G^{13}




I 89 A^{-7} G^{-7} $C^7(b9)$ $F\Delta^7$ $E^+7(+9)$



93 $B\flat\Delta^7$ $E\flat\Delta^7$ $B^+7(+9)$ $E^+7(+9)$ $A\text{m}^6$



97 **J** Saxophone soli-Rhythm section lay-out *ff*




101



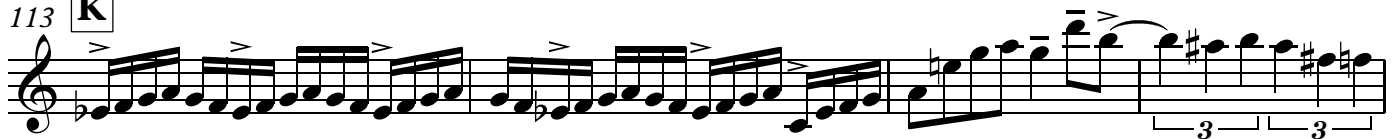
105



109



113 **K**



Probably...Bari

117

L

121

125

M

129 F7 Straight 8ths-**Open** saxes/bone3+4 Am⁶

133 F7 G7 F#7

N

137 F7 Am⁶

141 F7 G7 F#7

145 F7 Am⁶

149 F7 G7 Swing

O

153

fff

157

Bari Cadenza B+7(+9) Cadenza E+7(+9) Am⁶

Drums set-up vamp