

## Trombone 3

## Slight Accent

Sheila E

♩=105 Funk

Drums

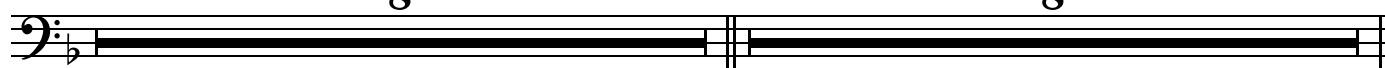
1

4

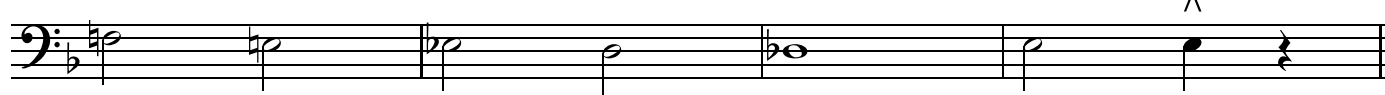
*p*9 **A**

8

8

25 **B***mf*

29

33 **C**

4

Play into stand or hat

*mp*41 **D***mf*

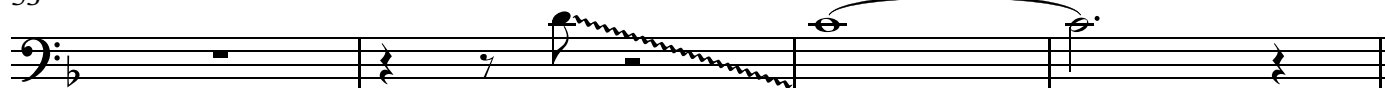
45



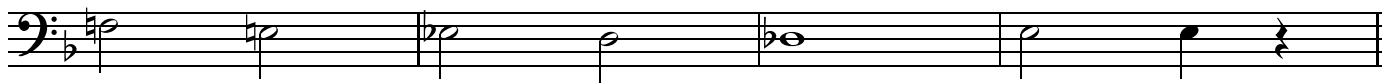
49

*f*

53

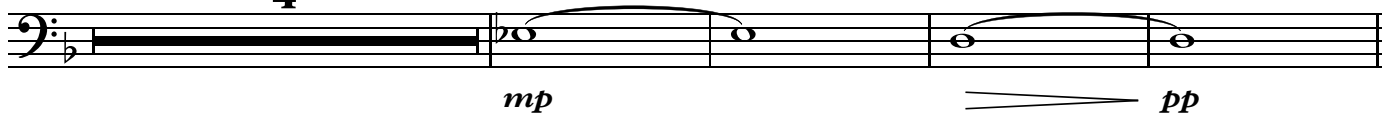
*p*57 **E***f*

61

65 **F**

4

Play into stand or hat

73 **G**

Alto Solo

8

**H**

Trombone Solo

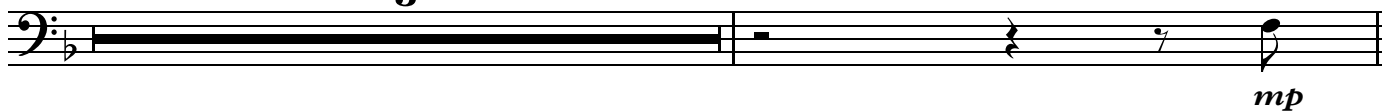
8

**I**

Alto Solo

89

3



Trombone Solo

93



Alto Solo

97

**J**

Drums solo/fill over figures

101



**K**

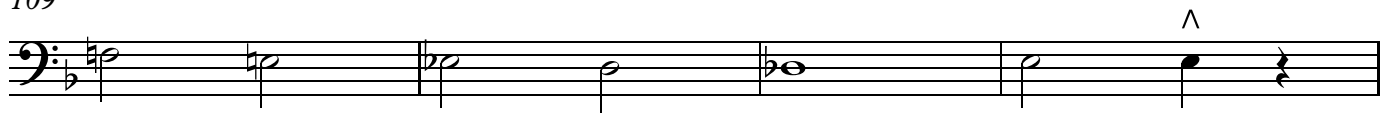
## Slight Accent...Trombone 3

3

105



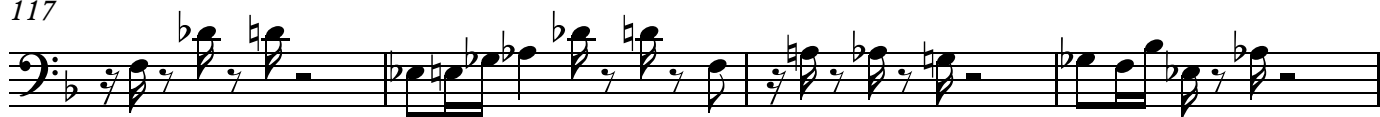
109

**L** SHOUT!...Drum solo over figure

113



117

121 **M**

133



137

**N**

Alto, Bone, and Drums-Go OFF!!!

8

**O**

On Cue

145

