

Celebrating the Music of Ray Charles

Commissioned by the New Orleans Jazz Orchestra-Irvin Mayfield-Artistic Director

♩=72

Conducted

The first staff of music is written in bass clef with a common time signature (C). It begins with a forte dynamic marking (*f*). The melody starts on a G2, moves to A2, then Bb2, and continues with a series of eighth and quarter notes, including a triplet of eighth notes (G2, A2, Bb2) and a half note (C3). The staff concludes with a whole note (G2).

5	A	Time-Ballade
---	----------	---------------------

6

B

13

17

2

The bass line is written on a single staff in bass clef. It begins with a whole rest, followed by a half note G2, a half note F2, a half note E2, and a half note D2. The notes are connected by a slur, and the dynamics *z* and *f* are indicated above and below the staff respectively.

21 **C**

7

[illegible]

29 | **D**

4

4

A musical staff with a bass clef and a whole note. The staff is empty except for the clef and the note head.

33

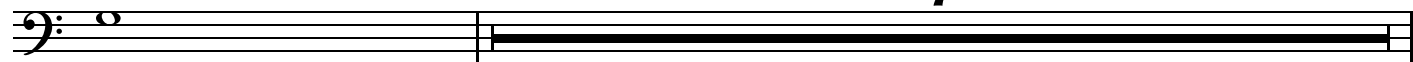
Musical notation for the bass line of 'The Rose Tree'. The key signature has one flat (B-flat). The melody starts with a piano (*p*) dynamic, followed by a forte (*f*) dynamic. The notation includes a treble clef, a key signature of one flat, and a series of notes and rests. The melody is written on a single staff.

You Don't Know Me...Trombone 2

2

37

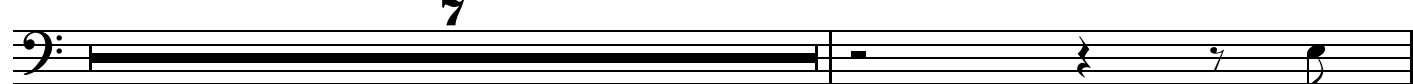
E



p

45

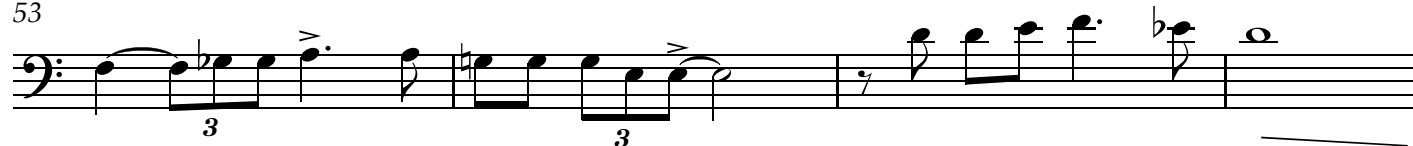
F



f

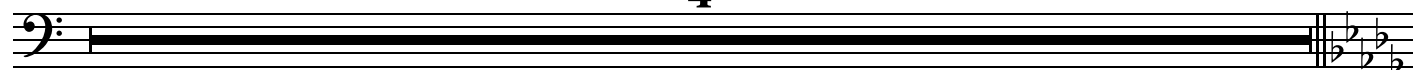
53

G



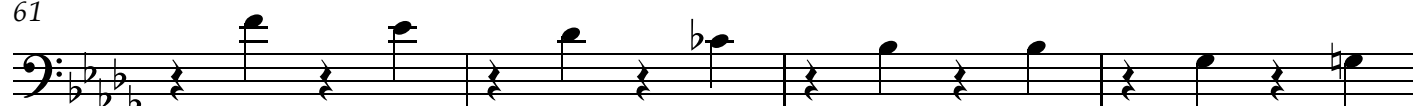
57

4



61

H



mp

65

Conducted



mf

f

68

I

